



www.billbeall.com

2,400 - 7,000 SF : FOR LEASE

Kansas Station

3041-3047 S. Kansas Expressway, Springfield, MO



HIGHLIGHTS

- 2,400 SF - 7,000 SF

- 3041 = 2,400 SF = \$2,940.00 Est. Monthly Payment
- 3043 = 4,600 SF = \$5,635.00 Est. Monthly Payment
- 7,000 SF = \$8,575.00 Est. Monthly Payment

- Front Door Parking
- Zoned: General Retail
- NNN: +/- \$4.70 SF
- Lease Rate: \$10.00 / SF



FOR ADDITIONAL INFORMATION CONTACT

Bill Beall Co., Inc.
2921 S. National Ave., Springfield, MO 65804
(417) 887-5535 email: beall@billbeall.com

Kansas Station

3041–3047 S. Kansas Expressway, Springfield, MO



FOR ADDITIONAL INFORMATION CONTACT

Bill Beall Co., Inc.

2921 S. National Ave., Springfield, MO 65804

Kansas Station

3041 S. Kansas Expressway, Springfield, MO



FOR ADDITIONAL INFORMATION CONTACT

Bill Beall Co., Inc.

2921 S. National Ave., Springfield, MO 65804

Kansas Station

3043-47 S. Kansas Expressway, Springfield, MO



FOR ADDITIONAL INFORMATION CONTACT

Bill Beall Co., Inc.

2921 S. National Ave., Springfield, MO 65804

Kansas Station

3039-41 S. Kansas Expressway, Springfield, MO



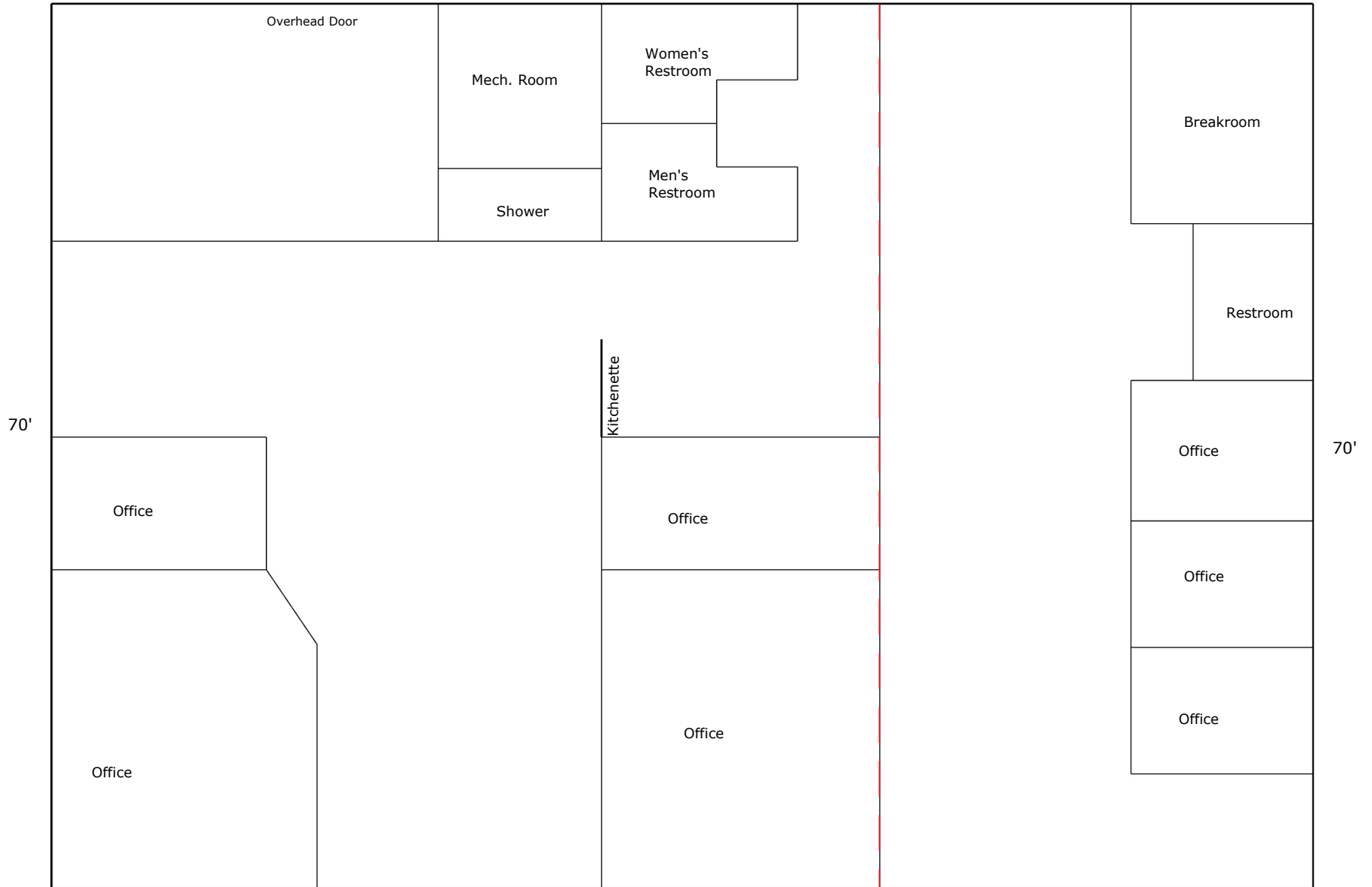
FOR ADDITIONAL INFORMATION CONTACT

Bill Beall Co., Inc.

2921 S. National Ave., Springfield, MO 65804

65.5'

34.28'



3043-47 S Kanas
4,600 SF

3041 S Kansas
2,400 SF

Kansas Station

3039-41 S. Kansas Expressway, Springfield, MO



Traffic Counts:

Kansas Expressway N. of Battlefield = 36,770

Kansas Expressway S. of Battlefield = 31,039

Battlefield E. of Kansas Expressway = 27,941

Battlefield W. of Kansas Expressway = 27,466

FOR ADDITIONAL INFORMATION CONTACT

Bill Beall Co., Inc.

2921 S. National Ave., Springfield, MO 65804

(417) 887-5535 email: beall@billbeall.com

Kansas Station

3039-41 S. Kansas Expressway, Springfield, MO



Traffic Counts:

Kansas Expressway N. of Battlefield = 36,770

Kansas Expressway S. of Battlefield = 31,039

Battlefield E. of Kansas Expressway = 27,941

Battlefield W. of Kansas Expressway = 27,466

FOR ADDITIONAL INFORMATION CONTACT

Bill Beall Co., Inc.

2921 S. National Ave., Springfield, MO 65804

(417) 887-5535 email: beall@billbeall.com



THE SCIENCE OF WHERE®

Business Summary

3003 S Kansas Expy, Springfield, Missouri, 65807
Rings: 1, 3, 5 mile radii

Prepared by Esri
Latitude: 37.15962
Longitude: -93.31817

| Data for all businesses in area | 1 mile | | | 3 miles | | | 5 miles | | | | | |
|---|-------------------|---------|-----------|---------|------------|---------|-----------|---------|------------|---------|-----------|---------|
| | Total Businesses: | | | 4,469 | | | 9,178 | | | | | |
| | Total Employees: | | | 89,099 | | | 168,082 | | | | | |
| Total Population: | | | 78,867 | | | 175,311 | | | | | | |
| Employee/Population Ratio (per 100 Residents) | | | 113 | | | 96 | | | | | | |
| by NAICS Codes | Businesses | | Employees | | Businesses | | Employees | | Businesses | | Employees | |
| | Number | Percent | Number | Percent | Number | Percent | Number | Percent | Number | Percent | Number | Percent |
| Agriculture, Forestry, Fishing & Hunting | 0 | 0.0% | 0 | 0.0% | 9 | 0.2% | 19 | 0.0% | 269 | 0.2% | 269 | 0.2% |
| Mining | 1 | 0.2% | 30 | 0.5% | 3 | 0.1% | 7 | 0.1% | 112 | 0.1% | 112 | 0.1% |
| Utilities | 0 | 0.0% | 89 | 1.6% | 1 | 0.0% | 5 | 0.1% | 527 | 0.3% | 527 | 0.3% |
| Construction | 29 | 6.5% | 217 | 3.8% | 211 | 4.7% | 1,549 | 1.7% | 510 | 5.6% | 4,116 | 2.5% |
| Building Construction | 8 | 1.8% | 46 | 0.8% | 70 | 1.6% | 339 | 0.4% | 187 | 2.0% | 1,272 | 0.8% |
| Heavy/Civil Eng Construction | 0 | 0.0% | 0 | 0.0% | 9 | 0.2% | 210 | 0.2% | 25 | 0.3% | 322 | 0.2% |
| Specialty Trade Contractor | 21 | 4.7% | 171 | 3.0% | 132 | 3.0% | 1,000 | 1.1% | 298 | 3.3% | 2,522 | 1.5% |
| Manufacturing | 17 | 3.8% | 343 | 6.0% | 79 | 1.8% | 1,882 | 2.1% | 251 | 2.7% | 6,237 | 3.7% |
| Wholesale Trade | 40 | 9.0% | 986 | 17.3% | 117 | 2.6% | 2,101 | 2.4% | 258 | 2.8% | 4,074 | 2.4% |
| Durable Goods | 30 | 6.8% | 599 | 10.5% | 90 | 2.0% | 1,168 | 1.3% | 203 | 2.2% | 2,659 | 1.6% |
| Nondurable Goods | 9 | 2.0% | 381 | 6.7% | 23 | 0.5% | 621 | 0.7% | 48 | 0.5% | 1,090 | 0.7% |
| Trade Broker | 2 | 0.5% | 7 | 0.1% | 5 | 0.1% | 312 | 0.3% | 7 | 0.1% | 325 | 0.2% |
| Retail Trade | 56 | 12.6% | 737 | 12.9% | 647 | 14.5% | 12,416 | 13.9% | 1,210 | 13.2% | 17,661 | 10.5% |
| Motor Vehicle & Parts Dealers | 7 | 1.6% | 45 | 0.8% | 64 | 1.4% | 1,632 | 1.8% | 144 | 1.6% | 2,198 | 1.3% |
| Furniture & Home Furnishings Stores | 3 | 0.7% | 15 | 0.3% | 30 | 0.7% | 248 | 0.3% | 64 | 0.7% | 423 | 0.3% |
| Electronics & Appliance Stores | 4 | 0.9% | 35 | 0.6% | 24 | 0.5% | 150 | 0.2% | 46 | 0.5% | 331 | 0.2% |
| Building Material & Garden Equipment & Supplies Dealers | 8 | 1.8% | 50 | 0.9% | 41 | 0.9% | 646 | 0.7% | 84 | 0.9% | 1,242 | 0.7% |
| Food & Beverage Stores | 3 | 0.7% | 311 | 5.5% | 60 | 1.3% | 1,303 | 1.5% | 121 | 1.3% | 2,333 | 1.4% |
| Health & Personal Care Stores | 5 | 1.1% | 67 | 1.2% | 87 | 1.9% | 1,096 | 1.2% | 133 | 1.4% | 1,591 | 0.9% |
| Gasoline Stations & Fuel Dealers | 6 | 1.4% | 25 | 0.4% | 22 | 0.5% | 113 | 0.1% | 38 | 0.4% | 202 | 0.1% |
| Clothing, Clothing Accessories, Shoe and Jewelry Stores | 5 | 1.1% | 16 | 0.3% | 101 | 2.3% | 1,072 | 1.2% | 155 | 1.7% | 1,423 | 0.8% |
| Sporting Goods, Hobby, Book, & Music Stores | 9 | 2.0% | 87 | 1.5% | 131 | 2.9% | 3,382 | 3.8% | 259 | 2.8% | 4,475 | 2.7% |
| General Merchandise Stores | 5 | 1.1% | 86 | 1.5% | 86 | 1.9% | 2,775 | 3.1% | 164 | 1.8% | 3,444 | 2.0% |
| Transportation & Warehousing | 7 | 1.6% | 60 | 1.1% | 40 | 0.9% | 499 | 0.6% | 111 | 1.2% | 2,321 | 1.4% |
| Truck Transportation | 3 | 0.7% | 27 | 0.5% | 16 | 0.4% | 90 | 0.1% | 45 | 0.5% | 649 | 0.4% |
| Information | 9 | 2.0% | 117 | 2.0% | 95 | 2.1% | 2,124 | 2.4% | 195 | 2.1% | 3,848 | 2.3% |
| Finance & Insurance | 26 | 5.9% | 136 | 2.4% | 333 | 7.5% | 2,553 | 2.9% | 611 | 6.7% | 4,462 | 2.6% |
| Central Bank/Credit Intermediation & Related Activities | 8 | 1.8% | 50 | 0.9% | 110 | 2.5% | 1,233 | 1.4% | 200 | 2.2% | 2,149 | 1.3% |
| Securities & Commodity Contracts | 8 | 1.8% | 24 | 0.4% | 72 | 1.6% | 408 | 0.5% | 155 | 1.7% | 841 | 0.5% |
| Funds, Trusts & Other Financial Vehicles | 10 | 2.3% | 62 | 1.1% | 151 | 3.4% | 912 | 1.0% | 256 | 2.8% | 1,472 | 0.9% |
| Real Estate, Rental & Leasing | 29 | 6.5% | 180 | 3.2% | 259 | 5.8% | 2,574 | 2.9% | 570 | 6.2% | 4,383 | 2.6% |
| Professional, Scientific & Tech Services | 49 | 11.0% | 363 | 6.4% | 416 | 9.3% | 2,691 | 3.0% | 982 | 10.7% | 7,287 | 4.3% |
| Legal Services | 11 | 2.5% | 84 | 1.5% | 99 | 2.2% | 609 | 0.7% | 241 | 2.6% | 1,694 | 1.0% |
| Management of Companies & Enterprises | 0 | 0.0% | 0 | 0.0% | 6 | 0.1% | 453 | 0.5% | 15 | 0.2% | 501 | 0.3% |
| Administrative, Support & Waste Management Services | 19 | 4.3% | 104 | 1.8% | 163 | 3.6% | 1,325 | 1.5% | 345 | 3.8% | 3,620 | 2.1% |
| Educational Services | 8 | 1.8% | 186 | 3.3% | 79 | 1.8% | 1,871 | 2.1% | 214 | 2.3% | 9,556 | 5.7% |

Source: Copyright 2024 Data Axle, Inc. All rights reserved. Esri Total Population forecasts for 2024.
Date Note: Data on the Business Summary report is calculated using Esri's Data allocation method which uses census block groups to allocate business summary data to custom areas.



THE SCIENCE OF WHERE®

Business Summary

3003 S Kansas Expy, Springfield, Missouri, 65807
Rings: 1, 3, 5 mile radii

Prepared by Esri
Latitude: 37.15962
Longitude: -93.31817

| by NAICS Codes | Businesses | | Employees | | Businesses | | Employees | | Businesses | | Employees | |
|---|------------|---------------|--------------|---------------|--------------|---------------|---------------|---------------|--------------|---------------|----------------|---------------|
| | Number | Percent | Number | Percent | Number | Percent | Number | Percent | Number | Percent | Number | Percent |
| Health Care & Social Assistance | 51 | 11.5% | 1,215 | 21.3% | 886 | 19.8% | 45,494 | 51.1% | 1,362 | 14.8% | 67,700 | 40.3% |
| Ambulatory Health Care | 33 | 7.4% | 444 | 7.8% | 706 | 15.8% | 17,096 | 19.2% | 1,031 | 11.2% | 24,610 | 14.6% |
| Hospital | 0 | 0.0% | 215 | 3.8% | 35 | 0.8% | 25,036 | 28.1% | 60 | 0.7% | 37,413 | 22.3% |
| Nursing/Residential Care | 9 | 2.0% | 310 | 5.4% | 41 | 0.9% | 1,584 | 1.8% | 63 | 0.7% | 2,124 | 1.3% |
| Social Assistance | 10 | 2.3% | 245 | 4.3% | 103 | 2.3% | 1,779 | 2.0% | 208 | 2.3% | 3,552 | 2.1% |
| Arts, Entertainment & Recreation | 6 | 1.4% | 38 | 0.7% | 79 | 1.8% | 1,225 | 1.4% | 175 | 1.9% | 1,932 | 1.1% |
| Accommodation & Food Services | 19 | 4.3% | 326 | 5.7% | 337 | 7.5% | 6,028 | 6.8% | 711 | 7.8% | 11,794 | 7.0% |
| Accommodation | 1 | 0.2% | 15 | 0.3% | 24 | 0.5% | 325 | 0.4% | 67 | 0.7% | 1,045 | 0.6% |
| Food Services & Drinking Places | 18 | 4.0% | 312 | 5.5% | 313 | 7.0% | 5,703 | 6.4% | 643 | 7.0% | 10,749 | 6.4% |
| Other Services (except Public Administration) | 63 | 14.2% | 350 | 6.2% | 601 | 13.4% | 3,360 | 3.8% | 1,291 | 14.1% | 10,093 | 6.0% |
| Repair & Maintenance | 11 | 2.5% | 51 | 0.9% | 94 | 2.1% | 574 | 0.6% | 225 | 2.5% | 1,577 | 0.9% |
| Automotive Repair & Maintenance | 8 | 1.8% | 44 | 0.8% | 58 | 1.3% | 462 | 0.5% | 153 | 1.7% | 1,287 | 0.8% |
| Personal & Laundry Service | 26 | 5.9% | 92 | 1.6% | 292 | 6.5% | 1,322 | 1.5% | 512 | 5.6% | 2,436 | 1.4% |
| Civic and Other Orgs | 26 | 5.9% | 207 | 3.6% | 215 | 4.8% | 1,464 | 1.6% | 554 | 6.0% | 6,080 | 3.6% |
| Public Administration | 5 | 1.1% | 215 | 3.8% | 32 | 0.7% | 645 | 0.7% | 168 | 1.8% | 7,517 | 4.5% |
| Unclassified Establishments | 6 | 1.4% | 1 | 0.0% | 76 | 1.7% | 30 | 0.0% | 168 | 1.8% | 72 | 0.0% |
| Total | 444 | 100.0% | 5,694 | 100.0% | 4,469 | 100.0% | 89,099 | 100.0% | 9,178 | 100.0% | 168,082 | 100.0% |

Source: Copyright 2024 Data Axle, Inc. All rights reserved. Esri Total Population forecasts for 2024.
Date Note: Data on the Business Summary report is calculated using Esri's Data allocation method which uses census block groups to allocate business summary data to custom areas.



THE SCIENCE OF WHERE®

Business Summary

3003 S Kansas Expy, Springfield, Missouri, 65807
Rings: 1, 3, 5 mile radii

Prepared by Esri
Latitude: 37.15962
Longitude: -93.31817

| by SIC Codes | Businesses | | Employees | | Businesses | | Employees | | Businesses | | Employees | |
|--|------------|---------|-----------|---------|------------|---------|-----------|---------|------------|---------|-----------|---------|
| | Number | Percent | Number | Percent | Number | Percent | Number | Percent | Number | Percent | Number | Percent |
| Agriculture & Mining | 6 | 1.4% | 67 | 1.2% | 77 | 1.7% | 425 | 0.5% | 165 | 1.8% | 1,150 | 0.7% |
| Construction | 26 | 5.9% | 194 | 3.4% | 187 | 4.2% | 1,287 | 1.4% | 465 | 5.1% | 3,690 | 2.2% |
| Manufacturing | 13 | 2.9% | 232 | 4.1% | 66 | 1.5% | 1,667 | 1.9% | 215 | 2.3% | 6,209 | 3.7% |
| Transportation | 11 | 2.5% | 76 | 1.3% | 72 | 1.6% | 815 | 0.9% | 175 | 1.9% | 2,883 | 1.7% |
| Communication | 3 | 0.7% | 60 | 1.1% | 52 | 1.2% | 1,587 | 1.8% | 93 | 1.0% | 2,187 | 1.3% |
| Utility | 1 | 0.2% | 91 | 1.6% | 10 | 0.2% | 277 | 0.3% | 21 | 0.2% | 697 | 0.4% |
| Wholesale Trade | 40 | 9.0% | 986 | 17.3% | 117 | 2.6% | 2,101 | 2.4% | 259 | 2.8% | 4,082 | 2.4% |
| Retail Trade Summary | 80 | 18.0% | 1,078 | 18.9% | 985 | 22.0% | 18,291 | 20.5% | 1,901 | 20.7% | 28,746 | 17.1% |
| Home Improvement | 8 | 1.8% | 50 | 0.9% | 45 | 1.0% | 677 | 0.8% | 88 | 1.0% | 1,274 | 0.8% |
| General Merchandise Stores | 1 | 0.2% | 64 | 1.1% | 53 | 1.2% | 2,590 | 2.9% | 99 | 1.1% | 3,184 | 1.9% |
| Food Stores | 7 | 1.6% | 323 | 5.7% | 92 | 2.1% | 1,635 | 1.8% | 171 | 1.9% | 2,795 | 1.7% |
| Auto Dealers & Gas Stations | 12 | 2.7% | 67 | 1.2% | 84 | 1.9% | 1,734 | 1.9% | 178 | 1.9% | 2,381 | 1.4% |
| Apparel & Accessory Stores | 4 | 0.9% | 15 | 0.3% | 85 | 1.9% | 1,004 | 1.1% | 129 | 1.4% | 1,301 | 0.8% |
| Furniture & Home Furnishings | 6 | 1.4% | 45 | 0.8% | 53 | 1.2% | 412 | 0.5% | 119 | 1.3% | 823 | 0.5% |
| Eating & Drinking Places | 18 | 4.0% | 312 | 5.5% | 297 | 6.7% | 5,505 | 6.2% | 615 | 6.7% | 10,450 | 6.2% |
| Miscellaneous Retail | 24 | 5.4% | 202 | 3.5% | 276 | 6.2% | 4,734 | 5.3% | 502 | 5.5% | 6,539 | 3.9% |
| Finance, Insurance, Real Estate Summary | 48 | 10.8% | 321 | 5.6% | 573 | 12.8% | 5,528 | 6.2% | 1,153 | 12.6% | 9,212 | 5.5% |
| Banks, Savings & Lending Institutions | 6 | 1.4% | 43 | 0.8% | 108 | 2.4% | 1,248 | 1.4% | 206 | 2.2% | 2,195 | 1.3% |
| Securities Brokers | 8 | 1.8% | 24 | 0.4% | 67 | 1.5% | 366 | 0.4% | 147 | 1.6% | 780 | 0.5% |
| Insurance Carriers & Agents | 10 | 2.3% | 62 | 1.1% | 150 | 3.4% | 910 | 1.0% | 255 | 2.8% | 1,470 | 0.9% |
| Real Estate, Holding, Other Investment Offices | 24 | 5.4% | 192 | 3.4% | 247 | 5.5% | 3,005 | 3.4% | 545 | 5.9% | 4,767 | 2.8% |
| Services Summary | 203 | 45.7% | 2,373 | 41.7% | 2,224 | 49.8% | 56,457 | 63.4% | 4,398 | 47.9% | 101,658 | 60.5% |
| Hotels & Lodging | 1 | 0.2% | 15 | 0.3% | 24 | 0.5% | 325 | 0.4% | 67 | 0.7% | 1,045 | 0.6% |
| Automotive Services | 9 | 2.0% | 51 | 0.9% | 72 | 1.6% | 574 | 0.6% | 196 | 2.1% | 1,546 | 0.9% |
| Movies & Amusements | 7 | 1.6% | 50 | 0.9% | 94 | 2.1% | 1,178 | 1.3% | 207 | 2.3% | 1,999 | 1.2% |
| Health Services | 40 | 9.0% | 1,035 | 18.2% | 766 | 17.1% | 43,294 | 48.6% | 1,125 | 12.3% | 63,447 | 37.8% |
| Legal Services | 9 | 2.0% | 43 | 0.8% | 87 | 1.9% | 478 | 0.5% | 220 | 2.4% | 1,520 | 0.9% |
| Education Institutions & Libraries | 6 | 1.4% | 159 | 2.8% | 61 | 1.4% | 1,951 | 2.2% | 187 | 2.0% | 9,920 | 5.9% |
| Other Services | 131 | 29.5% | 1,020 | 17.9% | 1,120 | 25.1% | 8,657 | 9.7% | 2,396 | 26.1% | 22,180 | 13.2% |
| Government | 5 | 1.1% | 215 | 3.8% | 30 | 0.7% | 636 | 0.7% | 165 | 1.8% | 7,498 | 4.5% |
| Unclassified Establishments | 6 | 1.4% | 1 | 3.8% | 76 | 1.7% | 30 | 0.7% | 168 | 1.8% | 72 | 4.5% |
| Totals | 444 | 100.0% | 5,694 | 100.0% | 4,469 | 100.0% | 89,099 | 100.0% | 9,178 | 100.0% | 168,082 | 100.0% |

Source: Copyright 2024 Data Axle, Inc. All rights reserved. Esri Total Population forecasts for 2024.
Date Note: Data on the Business Summary report is calculated using Esri's Data allocation method which uses census block groups to allocate business summary data to custom areas.



Disclaimer:

The information provided in this document is deemed reliable but not guaranteed and is subject to change without notice. Bill Beall Co. reserves the right to adjust prices, availability, or remove products or services from the market at its discretion. All transactions are contingent upon the execution of definitive agreements, and Bill Beall Co. makes no guarantees regarding the accuracy or completeness of the information.

This document is for informational purposes only and is not an offer to sell, purchase, or engage in any transaction. Bill Beall Co. disclaims any liability for the information provided and encourages recipients to conduct their own independent due diligence. Any estimates or assumptions may not be accurate, and Bill Beall Co. makes no representation regarding future outcomes. Photos are the property of their respective owners, and unauthorized use is prohibited.

Bill Beall Co. reserves the right to reject any offers or terminate discussions at its sole discretion. No legal obligation exists until a final, fully executed agreement is signed. By submitting an offer, the prospective party agrees to release Bill Beall Co. from any liability. Legal, tax, and title matters should be addressed with appropriate professionals.



2921 S. National Ave., Springfield, MO 65804

(417) 887-5535 email: beall@billbeall.com